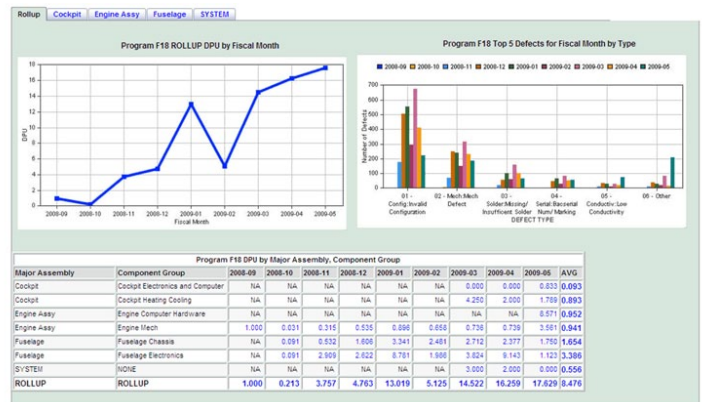




QUALITY METRICS AND REPORTING

Monitor, analyze and improve manufacturing quality across your enterprise

QMR provides super-fast and easy-to-use metrics allowing you to track, troubleshoot and improve manufacturing quality throughout your enterprise. Optimized for SAP Manufacturing Execution / Visiprise Manufacturing, QMR is an intuitive, browser-based decision-making tool designed for all levels of your organization, from executive management through factory managers, quality engineers and shop floor supervisors.



Key Benefits

Rapid Problem Identification and Correction

QMR provides intuitive real-time comparisons and trends across high level elements; then with a few clicks allows navigation down to problem detail, allowing for quick corrective action.

Reports on Your Business Your Way

QMR reporting structures can be rapidly and easily customized to the reporting elements your business uses – whether they be programs, product lines, or any other way you structure, engineer or build your products.

ROI

Unlike generic reporting engines costing much more, QMR plugs into your VM transactional database, and is up and running without additional time or cost. Generic solutions are slow and unwieldy – QMR is fast and intuitive, while still allowing for customization to your business' reporting structures.

Capability Overview

Metrics	DPO, DPU, FPO, FPU, DPMO, Raw Defects, Failures, Units, Operations, First Pass Yield, Effective Yield, Time Trend Analysis
Executive Dashboard	Y
Std Reports	Y auto-generated
Ad-Hoc Rpts	Y use drag and drop controls
Report Publication	Y global, group and user publication of std and ad-hoc report
Charts	Y multiple types
Excel Export	Y graphical and tabular
Excel Import	Y
Customizable Metric Algorithms	Y
Customizable Load Rules	Y
Drill Down	Y

Features

Plug and Play

Unlike generic cube-building products requiring time-consuming and expensive implementation projects, QMR works out of the box.

Executive Dashboards

QMR automatically generates executive dashboards for the reporting structures you define, like programs, product lines, etc., providing management with an intuitive one-page picture of quality across the enterprise.

Browser-Based

Zero client footprint and no desktop software to install.

Standard Report Suite

QMR's one-click report menus are automatically derived from your reporting structures, providing scores of easy single click reports on most common dimensions.

Ad-Hoc Reporting

Drag and drop ad-hoc report building engine allows sorting, summing, grouping, pivoting and selection for native VM data dimensions, as well as custom dimensions like Programs, etc.

Publication

All reports (std and ad-hoc) can be published and made available globally, to work groups, or to specific users.

Detailed Reporting

Hundreds of available VM fields, including VM custom table fields, can be included or excluded from QMR's detailed drill-thru reports, according to user-specific preferences.

Multi-Level

QMR provides standard and custom reports for any level of your organization, from programs and divisions down to small work groups or individual products and operations.

Features

Efficient

QMR is built specifically for Visiprise Manufacturing reporting, architected around Visiprise Manufacturing concepts and data. It simply outperforms more generic approaches, resulting in a fast, intuitive, and easier to use VM quality reporting.

Flexible

QMR's n-level cube-to-cube associative tool allows for quick and easy build-out of basic VM reporting dimensions, to provide virtually any desired reporting hierarchy, such as programs, assembly structures, cost structures, product lines, factories, BOMs etc.

Integrated

Drill down, drill across, pop-up pareto charts – QMR's navigational features allow you to quickly pinpoint your quality trends and issues.

Metrics

DPO, DPU, FPO, FPU, DPMO, Raw Defects, Failures, Units, Operations, First Pass Yield, Effective Yield, Time Trend Analysis

Excel Interfaces

QMR's setup tables can be imported as well as exported to Excel, making for easy shared setups like programs and yield points. QMR metrics reports export graphically to actual Excel charts, not just images, and can therefore be manipulated for desired presentation (chart type, etc). within Excel.

Customizable Business Rules

Allows for local business rules for data inclusion, specific metrics algorithms, load rules, etc.

Platform Specifications

Prerequisite:	Visiprise Manufacturing / SAP Manufacturing Execution
Database:	Oracle 9 and later (10g included)
Browser:	Firefox, IE, Chrome
Server Operating Systems:	Windows Server 2003,2008,2008 R2; XP; Vista; Windows 7
	Linux: Red Hat 5, SUSE 10.3, openSUSE 11.1, Ubuntu 9.04
	AIX 5.3 or 6.1
	MAC OS X v10.5.x-10.6
	Solaris 9 or 10